

LIVELLE




## METRICA FLASH XL



### DESCRIZIONE

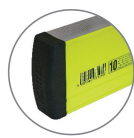
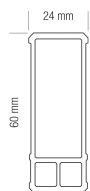
- Con maniglie
- Spessore maggiorato, peso 0,9 kg/m sezione con doppia barra interna di rinforzo
- Due piani fresati (escluso 150/180/200 cm)
- Fiale acriliche antiurto con 4 anelli (0° - 2%) con base fluorescente
- Tappi in gomma
- 3 fiale, 1 orizzontale + 2 verticali (120/150/180/200 cm)

### REFERENZE PRODOTTI CORRELATI

Ref.		L		
33182	8001066331826	80 cm	*	1
33183	8001066331833	100 cm	*	1
33185	8001066331857	50 cm	*	1
33186	8001066331864	60 cm	*	1
33212	8001066332120	120 cm		* 1
33215	8001066332151	150 cm		* 1
33218	8001066332182	180 cm		* 1
33220	8001066332205	200 cm		* 1

# GALLERY

---



TAPPO IN GOMMA  
ANTIURTO

